



ECO-LUXURY COMMUNITY



# MANA 88

MANA 88 is a magical and transformative eco-luxury community, redefining sustainable living in the Riviera Maya. Spanning over 50 hectares, this visionary development features 488 sustainable homesites and more than 80 world-class amenities, all designed to harmonize with the natural environment. As a regenerative project, MANA 88 preserves the region's breathtaking beauty while fostering meaningful social impact by giving back to the local community. This unique blend of ecological harmony, thoughtful design, and social responsibility makes MANA 88 a one-of-a-kind sanctuary that inspires connection, balance, and purpose. Designed by award-winning international architecture firm, SanzPont, MANA 88 features a revolutionary achievement in luxury eco-design.



# AKUMAL, WHERE NATURE MEETS MAGIC

Nestled between lush jungle and turquoise waters, Akumal is a hidden gem of the Riviera Maya, known as "The Place of the Turtles." Its pristine beaches, vibrant coral reefs, and tranquil cenotes make it a sanctuary for nature lovers and dreamers alike. Akumal invites you to immerse yourself in its mystical beauty and timeless charm—a perfect place to call home in harmony with nature.





# REDEFINING ECO-LUXURY

MANA 88 is the first sustainable and fully-autonomous development in the Riviera Maya, where eco-conscious living meets extraordinary design and luxury. Spanning more than 400 home sites, condos, and luxury villas, it is a haven of sustainable elegance, blending off-grid innovation with world-class amenities. MANA 88 is not just a place to live—it's a vision of a more harmonious future, inspired by nature's beauty and resilience.





# ORGANIC DESIGN, IN HARMONY WITH NATURE

MANA 88 embraces the natural curves of the land, crafting an environment that flows seamlessly with the jungle and cenotes. Inspired by nature's forms, each element—from the pathways to the boutique eco-hotel—exudes a sense of balance and serenity. Here, every detail reflects our dedication to coexisting with and honoring the Earth.







# CELEBRATING FLORA AND FAUNA

MANA 88 is alive with the wonders of nature. A family of 50 monkeys greets residents daily, and the nearby beaches of Akumal are a sacred nesting ground for sea turtles. The jungle hums with the melodies of native birds and wildlife, creating a living sanctuary that connects you to the rhythms of the natural world.



# A WORLD OF AMENITIES, ROOTED IN SUSTAINABILITY

With more than 80 thoughtfully curated amenities, MANA 88 offers everything from an organic supermarket and farm-to-table restaurants, to cenotes, a world-class med spa, state-of-the-art sports complex, and 7.5k of trails. Every feature reflects our commitment to eco-luxury and sustainability, ensuring your home is both indulgent and in harmony with nature.







# AMENITIES

ECO-LUXURY BOUTIQUE HOTEL

HOLISTIC CENTER & MED SPA

CLUBHOUSES WITH ECO-POOLS

FARM TO TABLE RESTAURANTS

PÁDEL, PICKLEBALL, BASKETBALL, TENNIS

2.5 KILOMETER MOUNTAIN BIKE COURSE

5 KILOMETERS OF WALKING TRAILS

JUNGLE GYM / INDOOR GYM

NATURAL FOODS SUPERMARKET

500 PERSON CAPACITY AMPHITHEATER

ART INSTALLATIONS, FIRE PITS, CONNECTION NESTS

EDUCATION CENTER / SCHOOL

KIDS / TEEN ZONE

WILDLIFE CENTER

PET PARKS

BEACH CLUB ACCESS and MORE



# AUTONOMOUS INFRASTRUCTURE

**ENERGY INDEPENDENCE:** Solar, gas, & smart-grid technology.

**WATER MANAGEMENT:** Rainwater harvesting, water recycling, and AI  
driven distribution systems.

**WASTE & SANITATION:** Reverse Osmosis purified drinking water in every  
faucet, composting, bio-gas, wastewater treatment facilities,  
waste-to-energy conversion & zero-waste initiatives.

**TRANSPORTATION & MOBILITY:** Electric vehicle charging, low-impact eco  
roadways, zero-impact transportation walkways/trails.

**DIGITAL CONNECTIVITY:** Starlink internet, fiber network, & underground  
services.

*Estimated homeowner utility costs: 25% less than traditional utilities.*







# A PROJECT WITH A PURPOSE

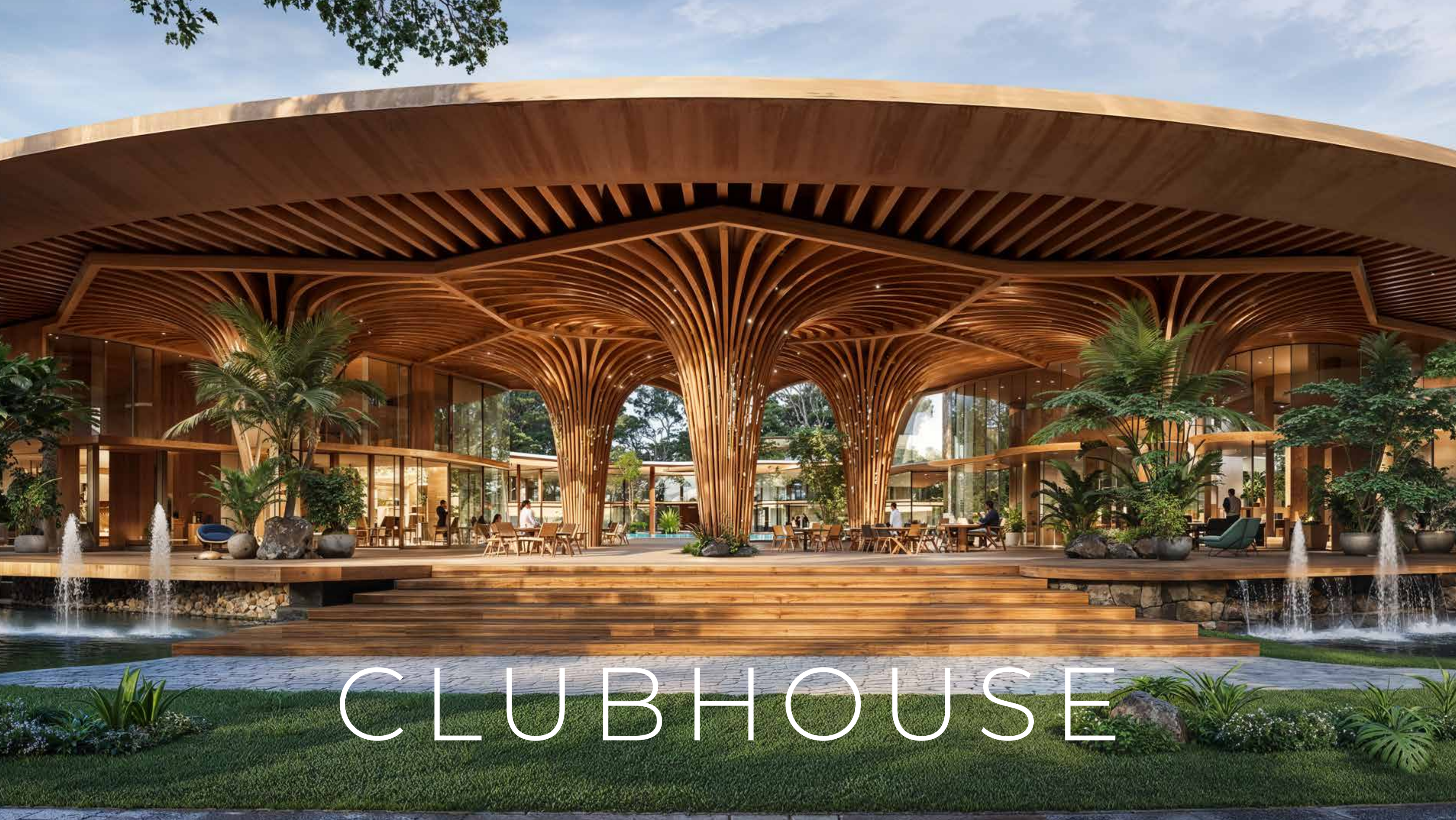
At MANA 88, every lot sold builds a brighter future. Through our partnership with **World Housing**, we're committed to gifting homes to women, children, and families in need of safe shelter. Together, we're weaving social good into every step of this project, creating a community where giving back is part of our foundation.





MAIN ENTRANCE





# CLUBHOUSE





# MAIN POOL





# HOLISTIC CENTER





SPA





SPA



The image shows a serene and modern therapy room. The walls are constructed from vertical wooden slats, creating a warm and textured environment. The room features curved, arched doorways and recessed lighting that casts a soft, golden glow. In the foreground, a massage table is covered with a white sheet and has two folded white towels on it. To the left, a small brass-colored bucket holds several bottles of massage oil. In the background, a small indoor garden with a tree and rocks is visible through an arched opening. A long wooden counter with various spa products and candles is located on the right side of the room.

# THERAPY ROOM





OBSERVATORY





# AMPHITHEATER





# CONNECTION NEST





# WINE BAR



A modern wine bar interior. On the left, tall wooden wine racks filled with various bottles line the wall. In the center, a long, thick wooden table is set with wine glasses, plates of food, and a centerpiece of flowers and candles. Several dark leather bar stools are tucked under the table. The ceiling is made of horizontal wooden slats with recessed lighting. Large floor-to-ceiling windows on the right side offer a view of a lush, green forest. The floor is made of irregular stone tiles.

# WINE BAR



A woman in a black dress is walking away from the camera through a modern architectural installation. The structure is composed of numerous curved wooden slats that form a series of arches and a canopy. The slats are arranged in a way that creates a sense of depth and movement. In the background, there are large, abstract stone sculptures, including a prominent one of a face. The scene is set in a lush, green environment with trees and foliage. The lighting is warm, suggesting late afternoon or early morning. The overall atmosphere is artistic and serene.

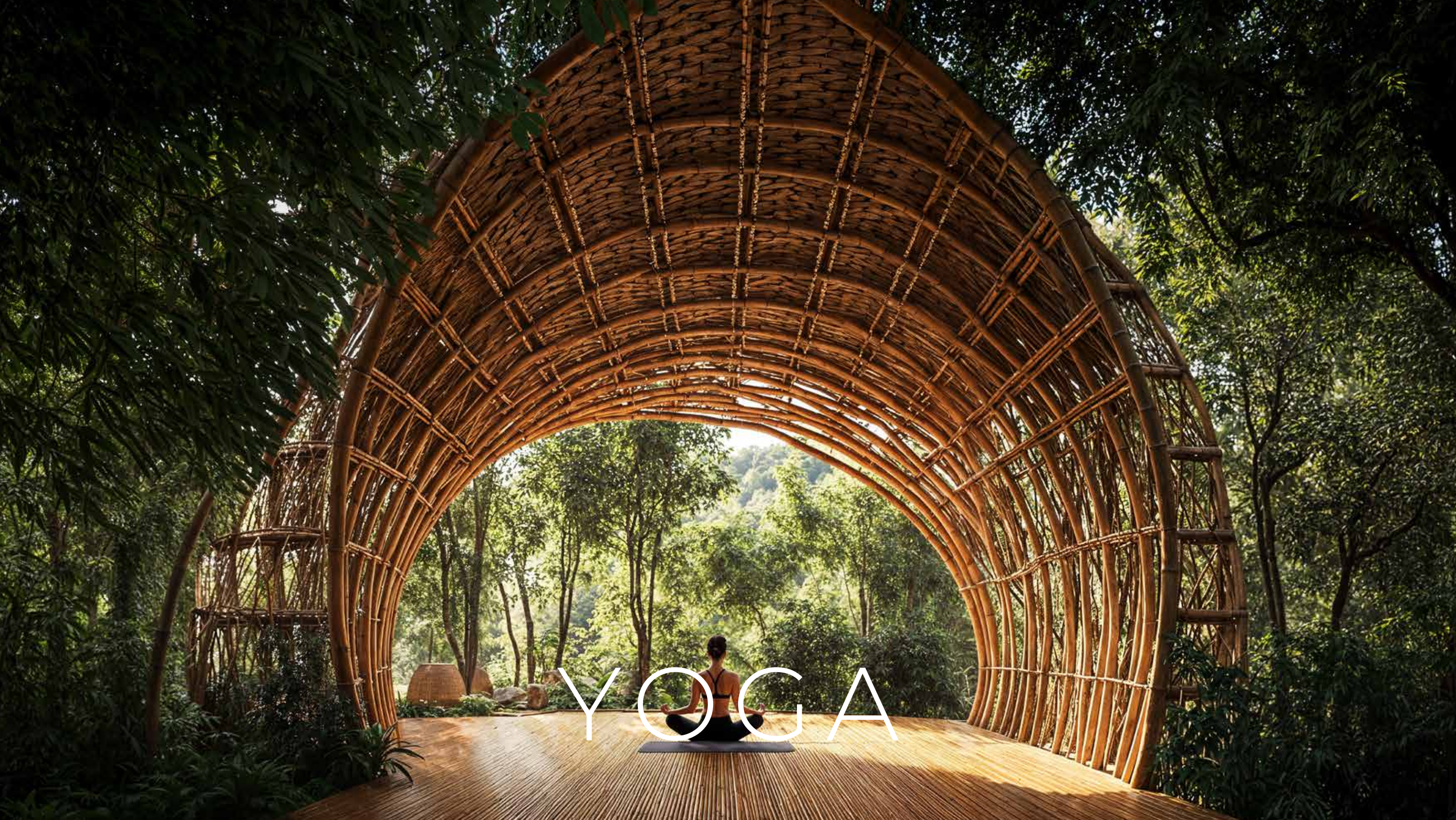
# ARTWALK



An aerial photograph of a circular building nestled within a dense tropical forest. The building's roof is composed of several large, overlapping, petal-like sections made of a light-colored, woven material, possibly bamboo or rattan. These sections are arranged in a circular pattern around a central, dark, circular pool of water. The pool has a small, circular island in the center with some greenery. The building is surrounded by a thick canopy of green trees, with several palm trees visible. The overall scene is serene and blends with the natural environment.

# SANCTUARY





YOGA



A modern villa with a curved wooden exterior and large glass windows, surrounded by lush greenery and a swimming pool. The villa features a prominent arched roof and a large glass facade that reveals the interior. It is nestled in a dense forest of tall trees, with a swimming pool in the foreground. The text "VILLA EXTERIOR" is overlaid on the image in a large, white, sans-serif font.

# VILLA EXTERIOR





# VILLA INTERIOR





ARCHITECTURE BY



DEVELOPED BY



MARKETED BY

